
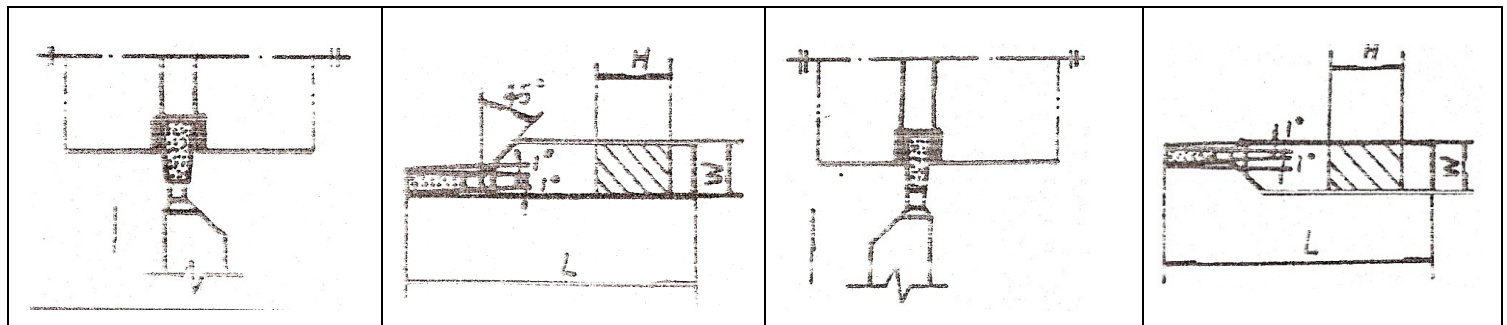


Turning Tools: Carbide Brazed Tipped: Parting Off Tools: ISO 7

 <p>RIGHT HAND SHOWN</p>	<p>Carbide Tipped Brazed Parting Off Tools ISO 7 DIN 4981 Similar to BHMA 260-274</p> <p>Grade P30, suitable for machining steel in low to moderate cutting speeds</p> <p>Grade K20, suitable for machining cast iron and short chip materials under moderate speeds and feeds</p>
--	--



Linear Code	Size mm H	Size mm W	Size mm L	Cutting	Material Grade
29-844-325	12	8	100	R/H	P30
29-844-326	12	8	100	L/H	P30
29-844-327	12	8	100	R/H	K20
29-844-331	16	10	110	R/H	P30
29-844-330	16	10	110	L/H	P30
29-844-332	16	10	110	R/H	K20
29-844-333	20	12	125	R/H	P30
29-845-461	20	12	125	L/H	P30
29-844-334	20	12	125	R/H	K20
29-845-462	20	12	125	L/H	K20
29-844-335	25	16	140	R/H	P30
29-845-463	25	16	140	L/H	P30
29-844-336	25	16	140	R/H	K20

Packed Weight and Dimensions

Linear Code	Weight g	W mm	H mm	L mm
29-844-325	79	30	21	112
29-844-326	78	30	21	130
29-844-327	86	30	21	130
29-844-331	135	30	21	135
29-844-330	132	30	21	135
29-844-332	135	30	21	136
29-844-333	225	33	21	135
29-845-461	242	33	21	142
29-844-334	228	34	21	150
29-845-462	249	33	21	142
29-844-335	403	38	28	152
29-845-463	410	34	23	150
29-844-336	421	40	23	158