

	<p>The Protractor is supplied with 3 stainless steel blades, 6, 8 and 12" long plus a right angle attachment</p> <p>Range: 360 degrees</p> <p>Resolution: 5 minutes</p> <p>Accuracy: ± 5 minutes</p> <p>Protractor head includes:</p> <ul style="list-style-type: none"> 1 x Blade locking screw 1 x Angle locking screw <p>Each protractor head is serialised</p>
---	---

Packed Weight and Dimensions

Code	Description	Weight g	W mm	H mm	L mm
51-525-360	Dial Bevel Protractor	750	107	30	310

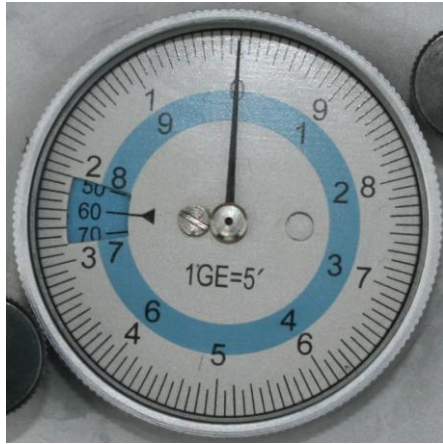
Test Information

 <p>Note: The Blade and Stock are not intended to be at the same height when set to the zero degree position.</p> <p>Therefore the Protractor cannot be placed on a flat surface to check the zero position</p>	 <p>A simple check to ensure the Protractor is reading correctly is to test it at 90 degrees on a surface plate against a Master Square as shown above</p>
--	---

How to read angles:

- Main Dial:**
 - 1 revolution of the dial hand = 10 degrees
 - Each degree has 12 divisions which = 5 minutes per division
 - The outer degree markings on the dial read anti-clockwise 0-9 and are black on a white background
 - The inner degree markings on the dial read clockwise 0-9 and are black on a blue background
- Window Scale:**
 - There are 4 x 90 degree segments each marked 0-90 in 10 degree intervals
 - 2 segments have a white background and 2 have a blue background
- Reading:**
 - When the window scale is white, read the white outer dial scale for degrees and minutes
 - When the window scale is blue, read the blue inner dial scale for degrees and minutes

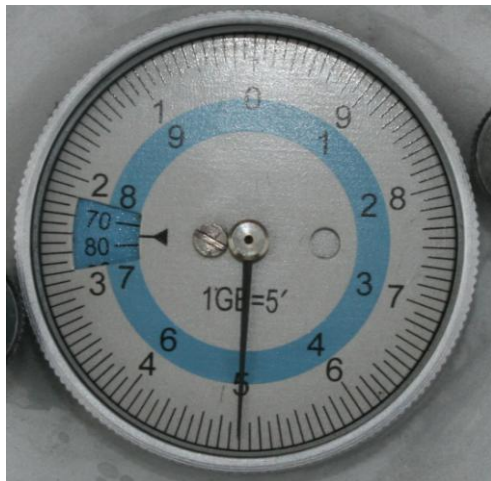
Reading Examples:



Actual reading: 60° Calculated reading 120°



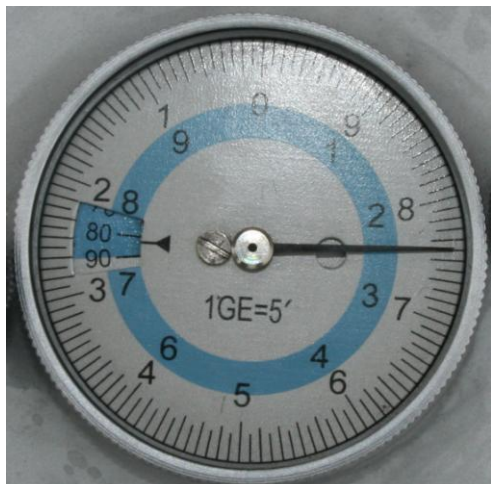
Blade position



Actual reading: 75° Calculated reading 105°



Blade position



Actual reading: 82°-25' Calculated reading 97°-35'

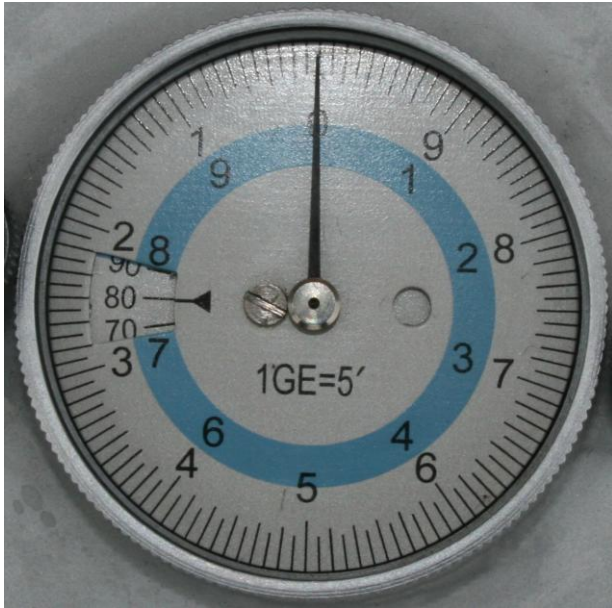


Blade position

Dial Bevel Protractor: 51-525-360

Page 3 of 4

Reading Examples:



Actual reading: 80° Calculated reading 100°



Blade position



Actual reading: 23'-30' Calculated reading 156°-30'

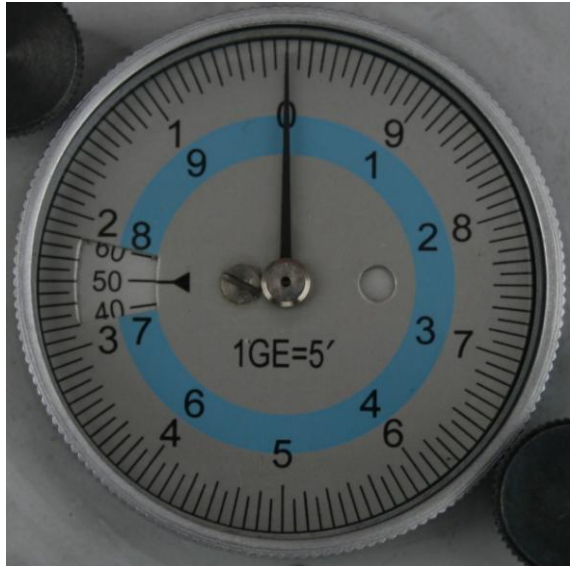


Blade position

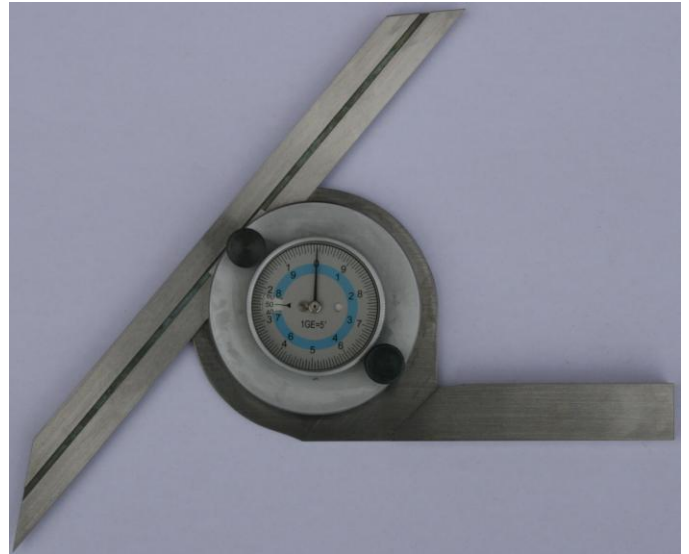
Dial Bevel Protractor: 51-525-360

Page 4 of 4

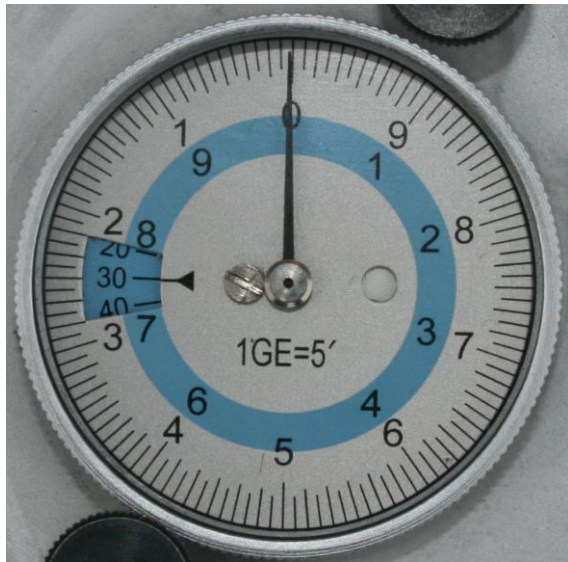
Reading Examples:



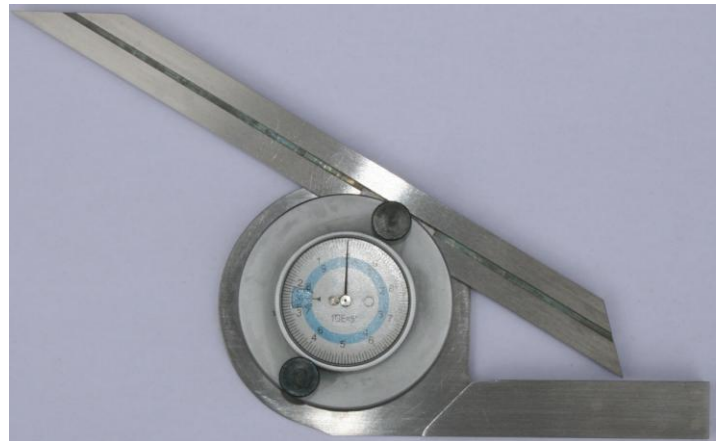
Actual reading: 50° Calculated reading 130°



Blade position



Actual reading: 30° Calculated reading 150°



Blade position