

### EDI-13 // Multi-Function Electronic Digital Indicator

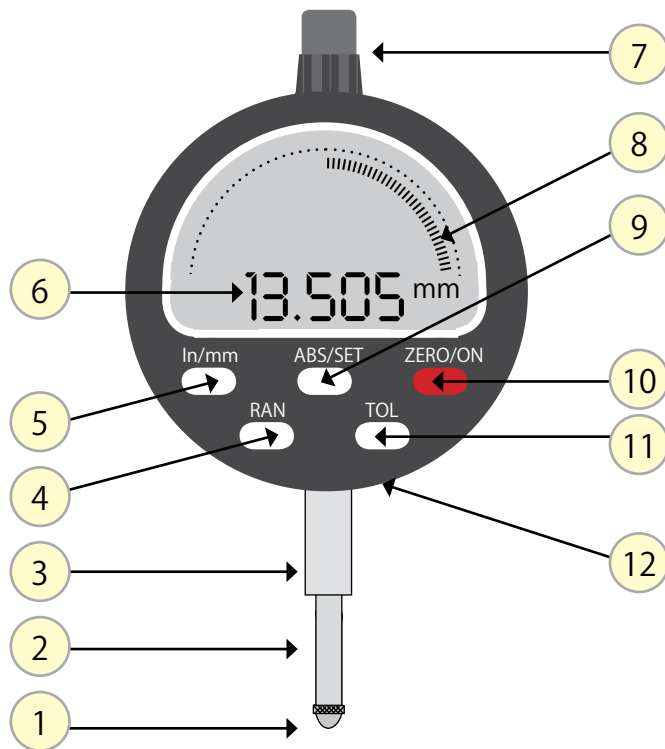
Page: 1 of 3

#### GENERAL SPECIFICATION

- DIN 878
- Range: 0-12.7mm/0-0.5"
- Resolution: 0.005mm/0.0002"
- Accuracy: 0.015mm / 0.00064"
- Dia of outer ring: 64mm
- Dial Display Rotates 360 degrees
- 5 button operation
  - Inch/metric conversion
  - ABS/set
  - Zero/ON
  - Tolerance/Direction
  - Ran. Run-Out Mode
- Large, clear LCD display
- Digital Fan for Run-Out viewing
- Power: 1 x 3V CR2032 Lithium Battery
- Max Speed: 0.6m/sec / 2.36in/sec
- Measuring Force: 1.5N
- Centre Lug Back
- 8mm Stem
- Anvil Thread M2.5

#### NOMENCLATURE

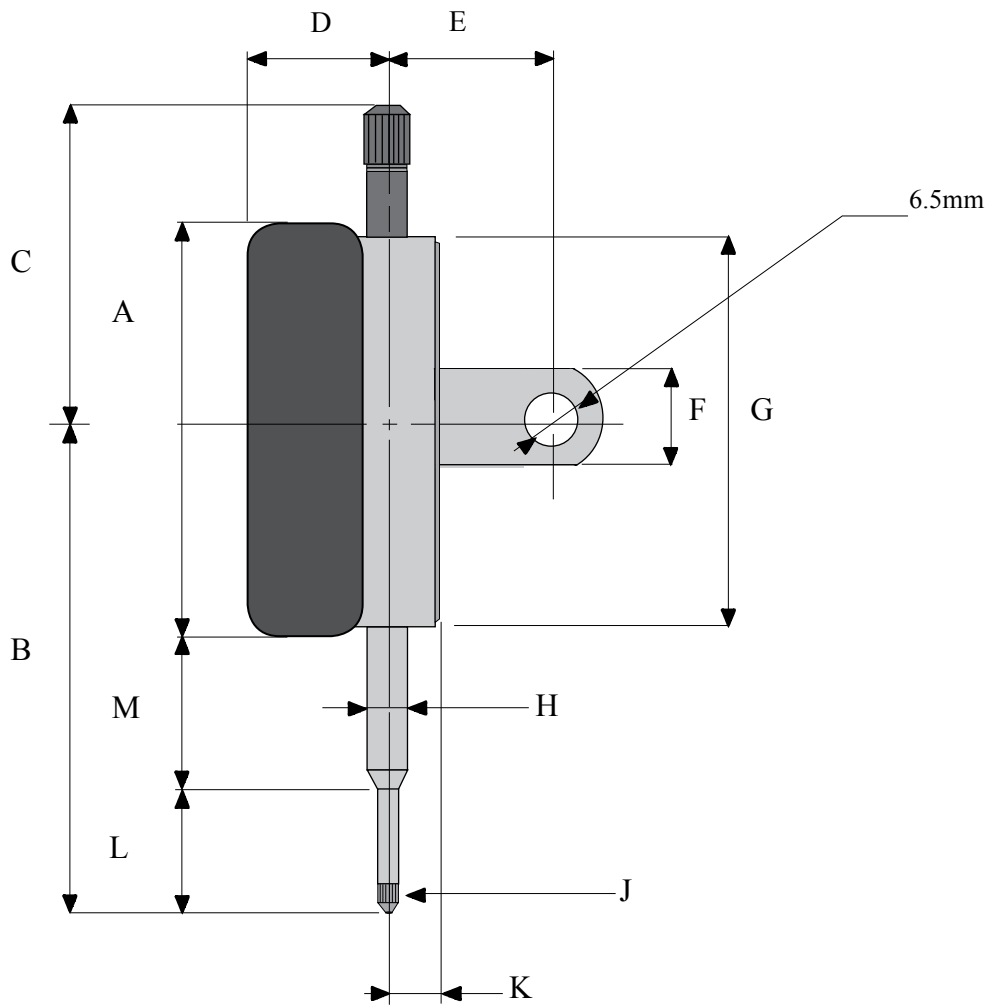
- 1 - Contact Point
- 2 - Spindle
- 3 - Stem
- 4 - RAN button
- 5 - In/MM Button
- 6 - LCD Display
- 7 - Spindle Top
- 8 - Digital Fan
- 9 - ABS/SET Button
- 10 - ZERO/ON Button
- 11 - TOL button
- 12 - Battery Compartment



#### CARE

Indicator face and spindle should be kept clean and dry.  
Do not connect any part of indicator to a voltage supply.  
Avoid shocks and impact to spindle and dia face  
remove battery if not being used for a long period.

#### DIMENSIONS



Product Code	A (mm)	B	C	D	E	F	G	H	J	K	L	M
EDI-13	62	70	50	26	20	17	58	8	M2.5	7	24	18

#### BUTTON FUNCTIONS

In/mm:	Inch/Metric measurement selection
ABS/SET:	Absolute and Relative measurement switching/setting
ZERO/ON:	ON/OFF plus Zero setting
RAN:	Run-Out Mode: Max / Min / Range Values
TOL:	Presets measuring tolerance also Sets + or - on Display

#### OPERATING INSTRUCTIONS

Press ZERO/ON button to turn indicator on.

When the Indicator is in Relative mode, press the ZERO/ON button (less than 2 seconds) to Zero the Indicator at any point of the spindle travel

#### ABSOLUTE SIZE SETTING

Press ABS/SET button (for 1 second and release) Display will show "ABS", "SET" and "+" sign in front of digits ("SET" will be flashing)

Press ABS/SET button (for 2 seconds and release) "+" sign will flash

Press ABS/SET button (release immediately) changes "+" to "-", press and release again will change back to "+"

Press ABS/SET button (for 2 seconds and release) first digit will flash

Press ABS/SET button (release immediately) this will change 0 to 1, press again to change 1 to 2, repeat until required number is reached

Press ABS/SET button (for 2 seconds and release) the next digit will flash

Repeat instructions 5 and 6 until the last digit has been set and is still flashing

Press ABS/SET button (for 2 seconds and release) "SET" will flash

Press ABS/SET button (release immediately) "SET" will disappear and the size will be set in the Indicator Memory

Press ABS/SET button at any spindle position (less than 1 second) to switch between Relative and Absolute measurement

#### TOLERANCE SETTING

Set Upper Tolerance first

Press TOL button (for 2 seconds and release) Display will show ">|" and "SET" ("SET" will be flashing)

Press TOL button (for 2 seconds and release) "+" sign will flash

Press TOL button (release immediately) changes "+" to "-", press and release again will change back to "+"

Press TOL button (for 2 seconds and release) first digit will flash

Press TOL button (release immediately) this will change 0 to 1, press again to change 1 to 2, repeat until required number is reached

Press TOL button (for 2 seconds and release) the next digit will flash

Repeat instructions 15 and 16 until the last digit has been set and is still flashing

Press TOL button (for 2 seconds and release) "SET" will flash

Press TOL button (release immediately) "SET" will continue to flash but ">|" will change to "|<"

Press TOL button (for 2 seconds and release) "+" sign will flash

Press TOL button (release immediately) changes "+" to "-", press and release again will change back to "+"

Repeat instructions 15 and 16 until the last digit has been set and is still flashing

Press TOL button (for 2 seconds and release) "SET" will flash

Press TOL button (release immediately) "SET" will disappear and OK will be displayed

Press TOL button (release immediately) "OK" will disappear and the Tolerance will be set in the Indicator Memory

When taking measurements in tolerance mode, the display will indicate as follows

"OK" Measurement within tolerance

">|" Measurement above upper limit

"|<" Measurement below lower limit

Note: Absolute and Relative measurement systems cannot be switched during Tolerance measurement use

#### REVERSE INDICATOR DISPLAY

In normal use pushing the plunger up into the Indicator will show a plus measurement. (no plus sign is indicated in this mode)

If it is required that pushing the plunger up should show a minus measurement, press the TOL button once for less than 2 seconds and a Minus sign will show on the display. To return to normal Plus mode press the TOL button for less than 2 seconds.

#### RUN-OUT MODE

Press RAN button once for less than 2 seconds to put Indicator in Run-Out Mode (see Run-Out Sign)

Rotate or move the component under the indicator spindle.

Press RAN button once for less than 2 seconds for Maximum Indicator reading

Press RAN button again for less than 2 seconds for Minimum Indicator reading

Press RAN button again for less than 2 seconds for Total Run-Out reading.

To deactivate or reset Run-Out Mode, press ZERO/ON Button