

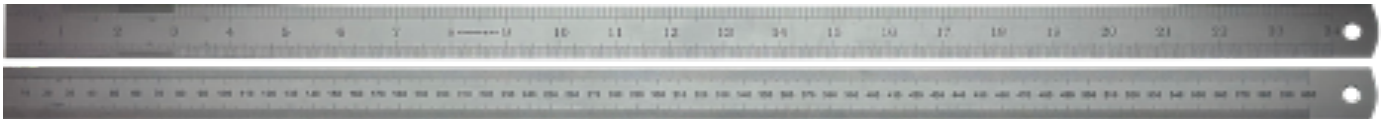


LDS1577

Last Update: 06/09/2023

# Datasheet

## Metric & Inch Two Sided D-end Steel Rule EEC-Class 1



### Technical:

- Metric & inch two sided
- Satin chrome finish, D-end style
- Front side: 16ths, 32nds, 64ths, 10ths, 20ths, 50ths, 100ths
- Reverse side: 1.0mm, 0.5mm

Tool specifications		
Length	Width x Thickness	Rule Type
600mm/24"	29x1	Rigid

Order Code	Manufacturers Code	Description
676-024	676-024	Metric & Inch Two Sided D-end Steel Rule EEC-Class 1